

## **PREFORMED INSULATION SHELLS**

### **FOR 2 WAYS AND 3 WAYS 'FAST' BALL VALVES**

**Fast and easy to fit and remove.  
With little cost, adequate insulation and  
protection against condensation.**

**Cross Linked Polyethylene** – Closed Cell Foam Insulating Shells with high insulating capacity due to its low thermal conductivity,  $\lambda$  below **0.04 W/mK**.

Insulating shells are made by two layers of Cross Linked Polyethylene with the outer layer **scratch-proof**.

A noticeable reduction of the primary energy requirement of buildings is achieved by using insulation shells resulting on an economic advantage for end users.

Moreover on cooling circuits insulation measures against condensate formation need to be taken into consideration. Use of insulating shells prevents such technical issues avoiding damp to condensate on valve surface.

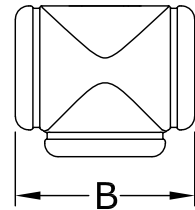
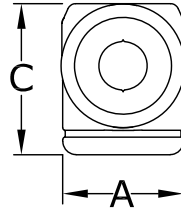
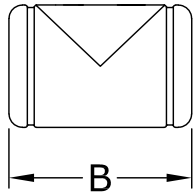
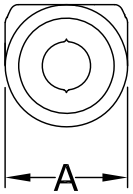
Finally **adhesive fasteners** ensure a simple and efficient sealing of the insulating shell and a quick opening for maintenance or replacement of the body valve.



# FEATURES



Practical adhesive fastener for opening and closing



## 2 WAYS

	A	B
1/2" - 3/4"	80	110
1"	90	114

## 3 WAYS

	A	B	C
1/2" - 3/4"	80	105	90
1"	90	120	105

# CODES

CODE	2 WAYS
GCF02	1/2" - 3/4"
GCF12	1"

CODE	3 WAYS
GCF03	1/2" - 3/4"
GCF13	1"